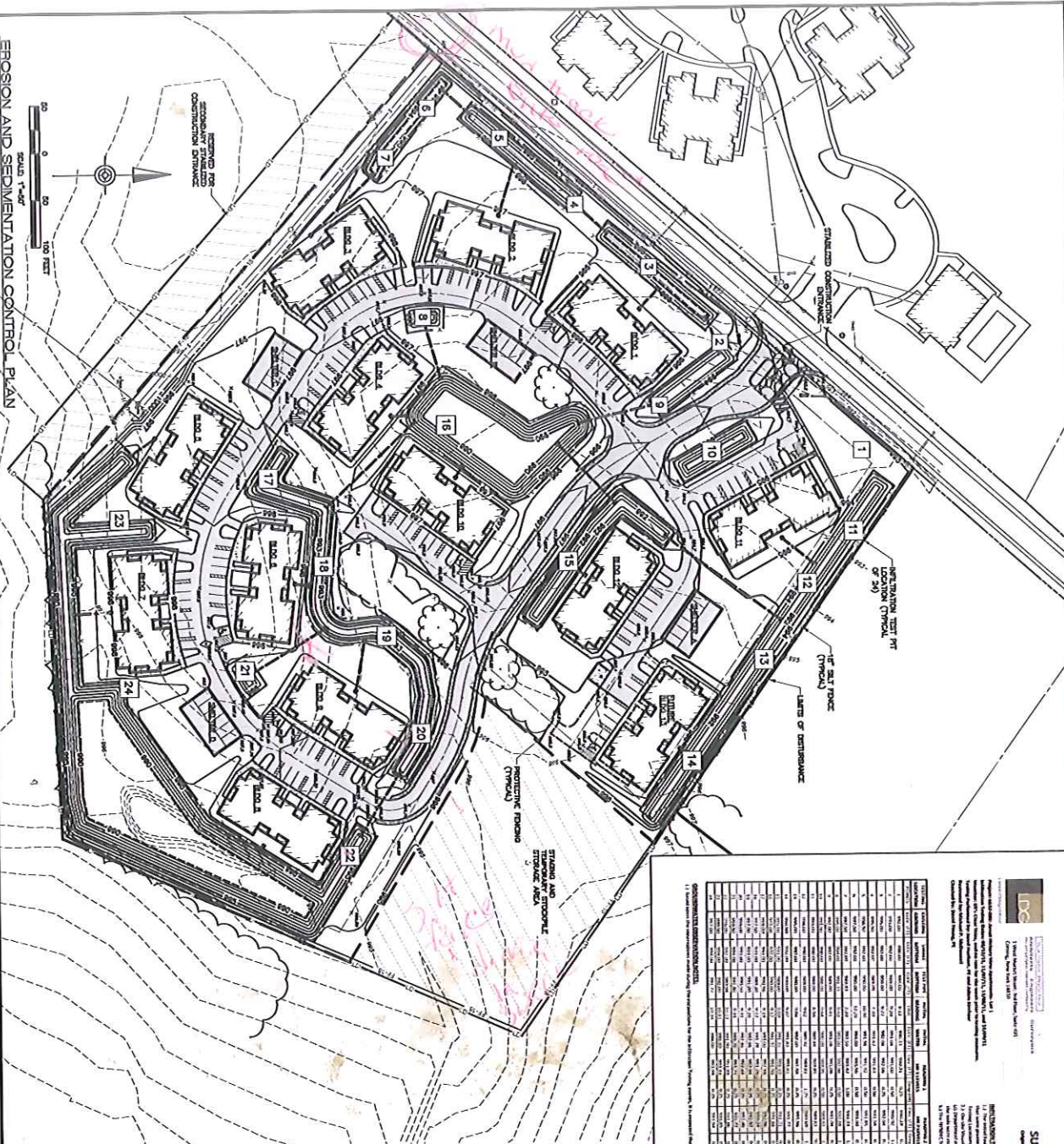
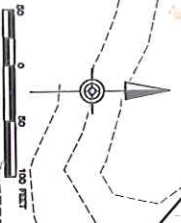


Chemung County Stormwater
Construction Inspection
Erosion and Sediment Control

| | | | | | |
|---|---------|--------------------------------------|---|------------------|-----------|
| Project Name | | Hickory View Apartments | Date | | 12/4/14 |
| Location | | Hickory Grove Road Town of Big Flats | Permit # | | NYR10V597 |
| Weather Conditions | | Sunny- Cold | Entry Time: | | 10:36 |
| On-Site Representative Present: | | Bryan Robinson | Exit Time: | | |
| Construction Site Notes: | | | | | |
| -all buildings under construction | | | | | |
| | | | | | |
| | | | | | |
| | | | | | |
| | | | | | |
| | | | | | |
| | | | | | |
| | | | | | |
| | | | | | |
| Yes | No | N/A | | | |
| X | | | All erosion and sediment control measures installed/constructed | | |
| | X | | All erosion and sediment control measures maintained properly | | |
| | X | | Are there currently more than 5 acres disturbed w/o prior approval | | |
| | X | | Have stabilization measures been initiated in inactive areas | | |
| X | | | Are permanent stormwater control measures being implemented | | |
| | X | | Was there a discharge into the receiving water on the day of inspection | | |
| | X | | Evidence of turbidity or oil in the receiving waters | | |
| X | | | Are weekly inspections being performed? | | |
| X | | | Are the inspections being performed by a qualified individual? | | |
| Corrections Needed: | | | | | |
| -sill fence around buildings is knocked down. This is allowing sediment into the vegetated swales which will need to be cleaned out prior to end of construction. | | | | | |
| -vegetated swale next to building 8, by the contractor yard, has been driven through. Vegetated swales are part of the storm water system and cannot be driven through. | | | | | |
| -material use for drop inlet protection appears not to be permeable. I caution you to watch it to ensure that it does not become a problem. No correction is needed for this just monitoring. | | | | | |
| | | | | | |
| | | | | | |
| | | | | | |
| Satisfactory | | Marginal | | Unsatisfactory X | |
| Date | 12/4/14 | | Inspector | Jessica Verrigni | |

12/14/14
10:30 am

EROSION AND SEDIMENTATION CONTROL PLAN



SUMMARY OF TESTING FOR DESIGN INFILTRATION RATES

1. The test results were performed on 12/14/14 at the "Hickory View Apartments" construction site. The test results were performed on 12/14/14 at the "Hickory View Apartments" construction site. The test results were performed on 12/14/14 at the "Hickory View Apartments" construction site.

| TEST NO. | TEST DATE | TEST TIME | TEST LOCATION | TEST TYPE | TEST RESULTS | TEST COMMENTS |
|----------|-----------|-----------|---------------|--------------|---------------------|---------------|
| 1 | 12/14/14 | 10:30 AM | 1 | INFILTRATION | 1.5 INCHES PER HOUR | TEST RESULTS |
| 2 | 12/14/14 | 11:00 AM | 2 | INFILTRATION | 1.5 INCHES PER HOUR | TEST RESULTS |
| 3 | 12/14/14 | 11:30 AM | 3 | INFILTRATION | 1.5 INCHES PER HOUR | TEST RESULTS |
| 4 | 12/14/14 | 12:00 PM | 4 | INFILTRATION | 1.5 INCHES PER HOUR | TEST RESULTS |
| 5 | 12/14/14 | 12:30 PM | 5 | INFILTRATION | 1.5 INCHES PER HOUR | TEST RESULTS |
| 6 | 12/14/14 | 1:00 PM | 6 | INFILTRATION | 1.5 INCHES PER HOUR | TEST RESULTS |
| 7 | 12/14/14 | 1:30 PM | 7 | INFILTRATION | 1.5 INCHES PER HOUR | TEST RESULTS |
| 8 | 12/14/14 | 2:00 PM | 8 | INFILTRATION | 1.5 INCHES PER HOUR | TEST RESULTS |
| 9 | 12/14/14 | 2:30 PM | 9 | INFILTRATION | 1.5 INCHES PER HOUR | TEST RESULTS |
| 10 | 12/14/14 | 3:00 PM | 10 | INFILTRATION | 1.5 INCHES PER HOUR | TEST RESULTS |
| 11 | 12/14/14 | 3:30 PM | 11 | INFILTRATION | 1.5 INCHES PER HOUR | TEST RESULTS |
| 12 | 12/14/14 | 4:00 PM | 12 | INFILTRATION | 1.5 INCHES PER HOUR | TEST RESULTS |
| 13 | 12/14/14 | 4:30 PM | 13 | INFILTRATION | 1.5 INCHES PER HOUR | TEST RESULTS |
| 14 | 12/14/14 | 5:00 PM | 14 | INFILTRATION | 1.5 INCHES PER HOUR | TEST RESULTS |
| 15 | 12/14/14 | 5:30 PM | 15 | INFILTRATION | 1.5 INCHES PER HOUR | TEST RESULTS |
| 16 | 12/14/14 | 6:00 PM | 16 | INFILTRATION | 1.5 INCHES PER HOUR | TEST RESULTS |
| 17 | 12/14/14 | 6:30 PM | 17 | INFILTRATION | 1.5 INCHES PER HOUR | TEST RESULTS |
| 18 | 12/14/14 | 7:00 PM | 18 | INFILTRATION | 1.5 INCHES PER HOUR | TEST RESULTS |
| 19 | 12/14/14 | 7:30 PM | 19 | INFILTRATION | 1.5 INCHES PER HOUR | TEST RESULTS |
| 20 | 12/14/14 | 8:00 PM | 20 | INFILTRATION | 1.5 INCHES PER HOUR | TEST RESULTS |
| 21 | 12/14/14 | 8:30 PM | 21 | INFILTRATION | 1.5 INCHES PER HOUR | TEST RESULTS |
| 22 | 12/14/14 | 9:00 PM | 22 | INFILTRATION | 1.5 INCHES PER HOUR | TEST RESULTS |
| 23 | 12/14/14 | 9:30 PM | 23 | INFILTRATION | 1.5 INCHES PER HOUR | TEST RESULTS |
| 24 | 12/14/14 | 10:00 PM | 24 | INFILTRATION | 1.5 INCHES PER HOUR | TEST RESULTS |

SUMMARY OF TESTING FOR DESIGN INFILTRATION RATES



EROSION AND SEDIMENTATION CONTROL PLAN
 SITE/CIVIL CONSTRUCTION DOCUMENTS
 HICKORY VIEW APARTMENTS MULTI-FAMILY DEVELOPMENT
 TOWN OF BIG FLATS, CHEMUNG COUNTY, NEW YORK

Parrot Realty Corporation
 100 Salvatore Drive
 Horseheads, NY 14845
 PHONE (607) 734-5235
 www.ParrotRealty.com

Larson Design Group • Architect-Engineers-Surveyors
 11 West Market Street • Suite 205
 Corning, New York 14830
 PHONE 607.838.7078 • TOLL FREE 877.523.8603
 FAX 607.838.7028 • www.larson-design.com



| NO. | DATE | ISSUE / REVISIONS | BY | CHK | APP |
|-----|----------|---------------------|-----|-----|-----|
| 1 | 12/14/14 | ISSUED FOR PERMITS | ALX | ALX | ALX |
| 2 | 12/14/14 | REVISED PER PERMITS | ALX | ALX | ALX |
| 3 | 12/14/14 | REVISED PER PERMITS | ALX | ALX | ALX |
| 4 | 12/14/14 | REVISED PER PERMITS | ALX | ALX | ALX |
| 5 | 12/14/14 | REVISED PER PERMITS | ALX | ALX | ALX |
| 6 | 12/14/14 | REVISED PER PERMITS | ALX | ALX | ALX |
| 7 | 12/14/14 | REVISED PER PERMITS | ALX | ALX | ALX |
| 8 | 12/14/14 | REVISED PER PERMITS | ALX | ALX | ALX |
| 9 | 12/14/14 | REVISED PER PERMITS | ALX | ALX | ALX |
| 10 | 12/14/14 | REVISED PER PERMITS | ALX | ALX | ALX |
| 11 | 12/14/14 | REVISED PER PERMITS | ALX | ALX | ALX |
| 12 | 12/14/14 | REVISED PER PERMITS | ALX | ALX | ALX |
| 13 | 12/14/14 | REVISED PER PERMITS | ALX | ALX | ALX |
| 14 | 12/14/14 | REVISED PER PERMITS | ALX | ALX | ALX |
| 15 | 12/14/14 | REVISED PER PERMITS | ALX | ALX | ALX |
| 16 | 12/14/14 | REVISED PER PERMITS | ALX | ALX | ALX |
| 17 | 12/14/14 | REVISED PER PERMITS | ALX | ALX | ALX |
| 18 | 12/14/14 | REVISED PER PERMITS | ALX | ALX | ALX |
| 19 | 12/14/14 | REVISED PER PERMITS | ALX | ALX | ALX |
| 20 | 12/14/14 | REVISED PER PERMITS | ALX | ALX | ALX |
| 21 | 12/14/14 | REVISED PER PERMITS | ALX | ALX | ALX |
| 22 | 12/14/14 | REVISED PER PERMITS | ALX | ALX | ALX |
| 23 | 12/14/14 | REVISED PER PERMITS | ALX | ALX | ALX |
| 24 | 12/14/14 | REVISED PER PERMITS | ALX | ALX | ALX |





851 Chemung Street
Horseheads, New York 14845
Ph. 607.796.2216

PROJECT: Hickory View Apartments
Town of Big Flats
Municipal Inspection
December 4, 2014

BY Jessica Verrigni, CPESC, CPSWQ



Material used for the construction of drop inlet looks to be impermeable. Monitor this to make sure water does not back up too much.



Silt fence needs to be maintained. Sediment can get into the swales and clog their infiltration.



Silt fence needs to be maintained. Sediment can get into the swales and clog their infiltration.



Silt fence needs to be maintained. Sediment can get into the swales and clog their infiltration.